



## Individual material flow and storage systems

### We also serve following industries:

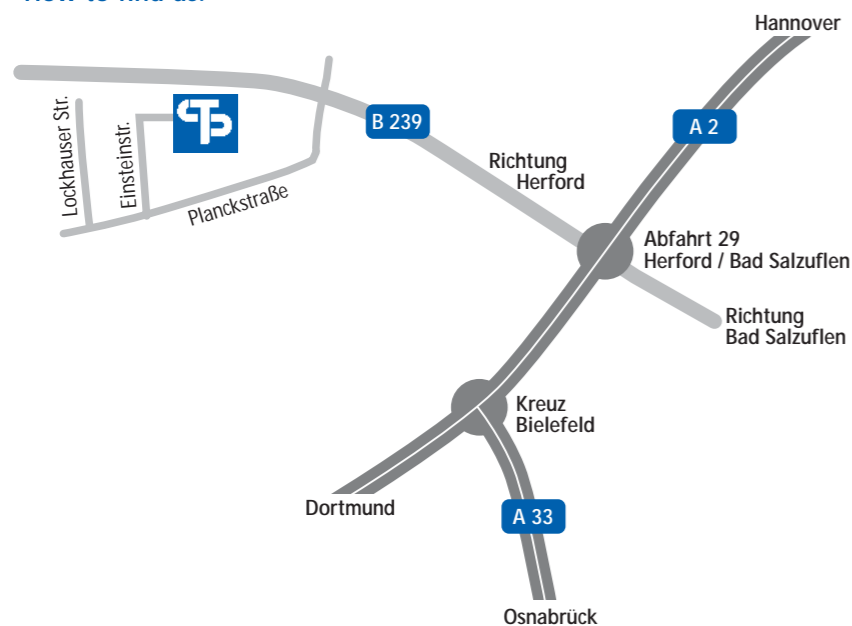
- Wood and particleboard industry
- Furniture industry
- Timber trade
- Rubber industry
- Natural stone industry
- Glass industry
- Building board industry
- Metal & plastic industry

### Our products:

- Material handling engineering
- High bay storage
- Area storage
- Feeding and stacking
- Saws
- Squared timber automat & packing lines
- Edge cleaning machines
- Stack turnovers

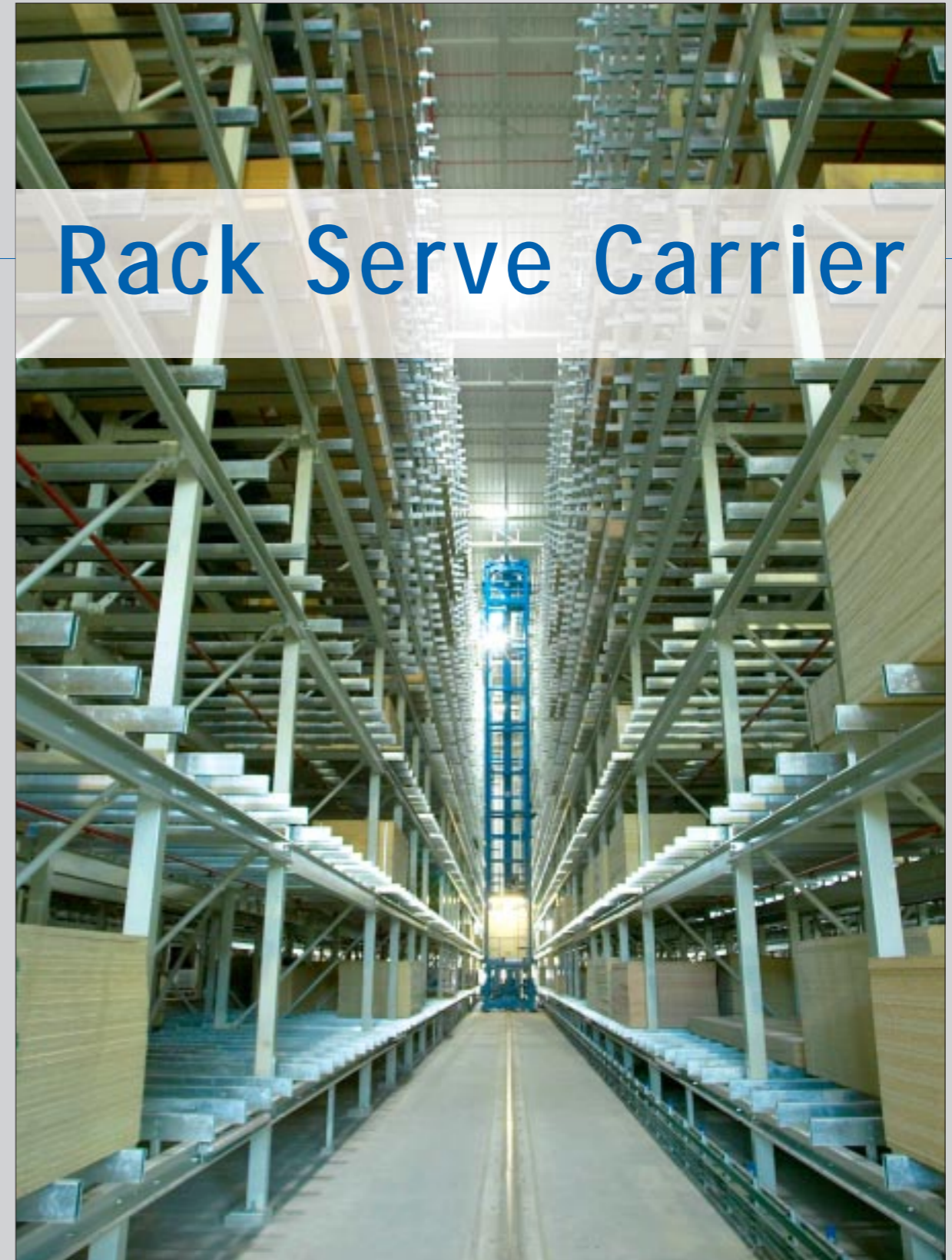


### How to find us:



**SYSTRAPLAN**   
Individuelle Materialfluß- und Lagertechnik

SYSTRAPLAN GmbH & Co. KG    Tel.: +49 (0) 52 21 / 76 77-0    eMail: info@systraplan.de  
 Einsteinst. 5 · D-32052 Herford    Fax: +49 (0) 52 21 / 76 77 77    www.systraplan.com



# Rack Serve Carrier

**SYSTRAPLAN**   
 Individuelle Materialfluß- und Lagertechnik

*Know-how makes goods move*

## Direct picking on the rack serve carrier

With this high bay storage system, developed by Systraplan, stacks as well as single boards are moved. Among the transport of stacks and single boards the picking is directly proceeded on the high bay storage system. Therefore, an additional area for picking is not necessary. Remaining quantities simply remain in stock. This saves time, space, energy and extra appropriation for picking.

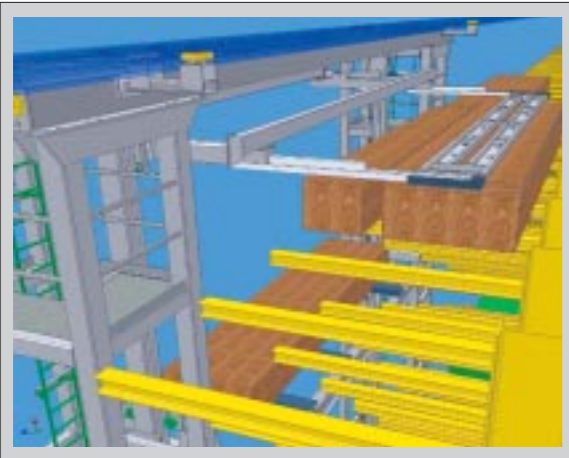
### Variable handling of extreme different loads

The technique is impressive. Whole board-stacks are taken over and are assigned to a storing place by the high bay storage system. Later on telescopic-suction arms remove single boards from the stack for order. It just takes a quarter of an hour to build a consignment of 30 different boards.

### Damage-free material handling

One of the most important advantages is the damage-free handling of material. Within short time the sensitive boards are appropriately prepared for the resale.

By doing so the automatic high bay storage system operates continuously at a comparatively high speed.



### Direct connection to the PPS - system

The electronic data processing control ensures fastest feeding and discharging, which facilitates a batch-, package- and piece-wise distribution.

All goods movement data are adjusted just in time by a direct linking of the full automatic high bay storage system with the merchandise management system.

### Stock-status always available

Hence, the sales team can always revert to an up-dated asset of boards provided by an easy and interference-proof operating mode.

Systraplans' storage and control program can be operated under the Microsoft operating system Windows.

This guarantees that today's and tomorrow's requirements will be met also in future in respect of system design, flexibility and links to standard systems and standard software.



### Two independently controllable lifting platforms - over 20% higher output

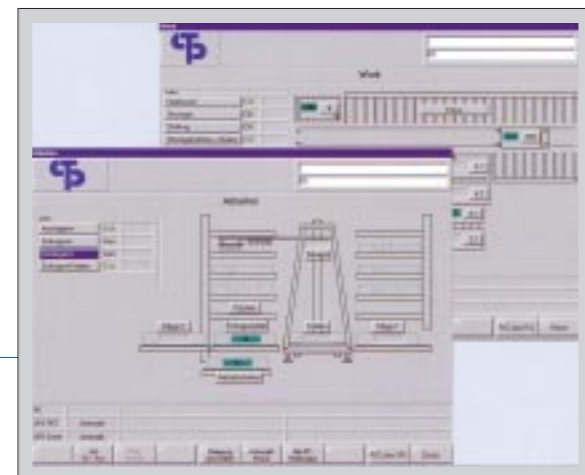
In comparison to conventional high bay storage systems this system works with two lifting platforms which can be controlled independently. Each platform is equipped with own lifting drives and load suspension devices, which can work to both sides of the aisle. Due to the independent working from each other, over 20% higher output in comparison to conventional systems can be achieved.

### Applications for most different materials and sectors of industries

The load suspension means are prepared and constructed for boards with most different dimensions and materials.

### State of the art graphical screen interface

The application has a state of the art graphical screen interface. The user screens are clear, application orientated and easy to use. All information are stored in a standard database.



### Material handling with a maximum on efficiency for different applications

Only with a maximum of efficiency on material handling, order and product process is it possible to control a customer-related production, the growing variety but also the adherence to delivery dates, high delivery quality and short lead times.

### Automatic commissioning of HPL

With the Systraplan storage system is it possible to single these high pressure laminates from stacks in order to build a consignment in the rack serve carrier. Because of the high pressure laminates value is a gentle treatment of single sheets important.



### Target - orientated, internal transport at the natural stone production

This storage system enables a flexible placing of slabs as well as already machined worktops placed and released from stock. Processed boards are placed into stock between the single machining intervals and are then released from stock, newly arranged in groups. Due to the target-orientated internal transport and newly arranged material groups in accordance to the production steps to follow, an extremely high working load of the machining units, operating in multiple shifts, is gained, which results in a very high productivity.

By combining parts, which are to be machined by similar production steps, set-up times can be minimised and the operational capacity can be increased.

As a competitive and flexible company we are swiftly responding to specific customer demands.



### Worktop storage system for the kitchen industry

The load lifting device are prepared for the handling of different board sizes. The construction of the shelf system allows a flexible using. Thus all board sizes can be stored in every shelf. The storage control automatically places the depots.

### Despite multiple storage, single boards can be reached

The rack serve carrier stores the long goods up to a threefold depth in order to gain a most possible filling of the storage or a complete occupation. Despite storing in threefold depth single boards can be consigned without any problems from stacks positioned behind.

### High bay storage system for strips

Storage and removal from storage of single boards, stacks or orders is performed via a chain conveyor, integrated into the carrier. The suction frame is divided into four separately or jointly controlled segments and suitable for multiple depth storage of the boards. Orders for removal from storage can be compiled on the chain conveyor and transferred to the onsite cutting saw.



### Board storage for full and half sizes

For warehousing, the telescopic forks take entire stacks for storage in the cantilever type rack compartment. For removal from storage, the single boards are fed directly to the cutting saw by a vacuum system.

**SYSTRAPLAN**   
Individuelle Materialfluß- und Lagertechnik

Know-how makes goods move